

# West Central Texas Municipal Water District

## BASA Ward C Plant Bypass Project No. 2023-16 December, 2022

### Overall Sequence of Construction

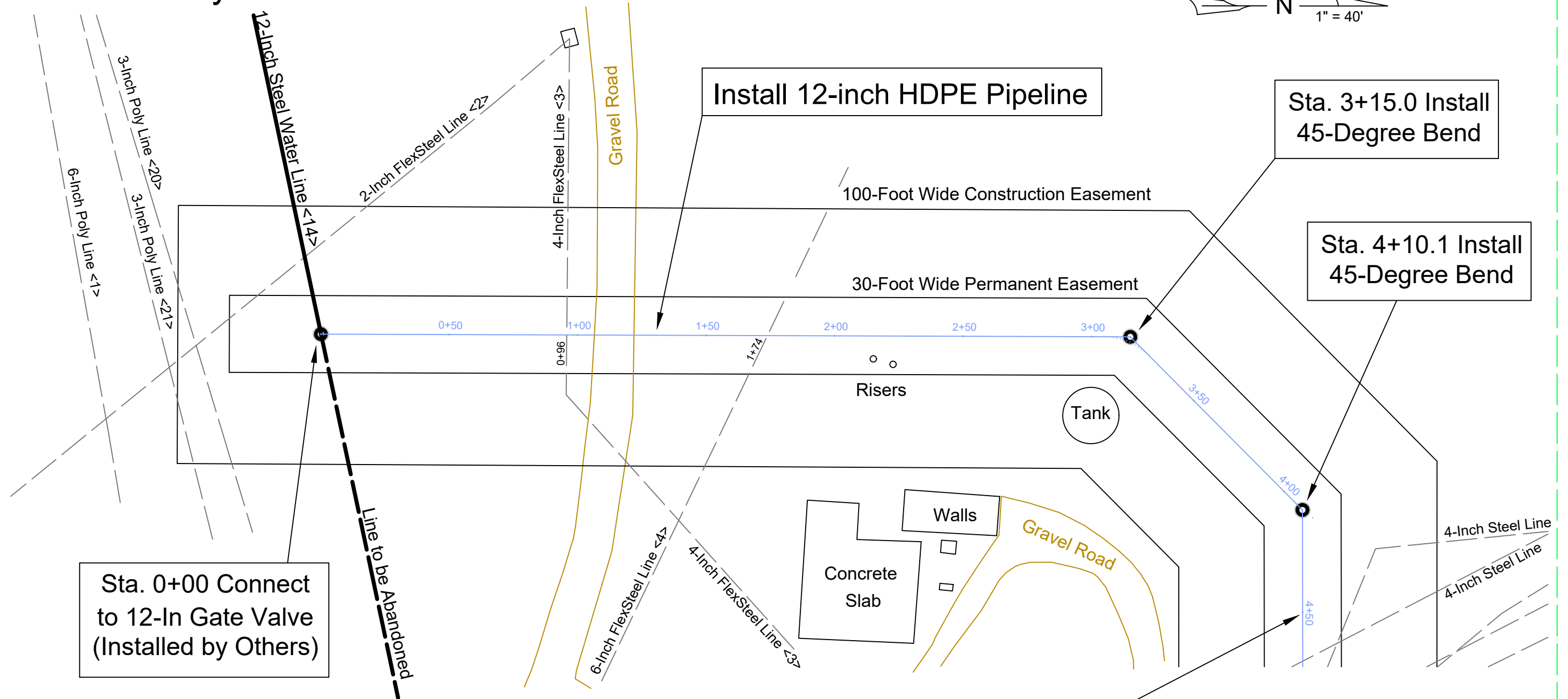
| Step | Task  | Location | Work Done By | BASA Plant Water Deliveries          |                         |
|------|---|----------|--------------|--------------------------------------|-------------------------|
|      |   |          |              | During Work                          | After Work is Completed |
| 1    | Close exist North Isolation Valve in Plant Yard                             | Plant    | BASA         | Both Directions                      | from South              |
| 2    | Cut-In 12x12x12 tee with valve in existing pipe                             | 7+45     | District     | from South                           | from North              |
| 4    | Close Ward C "Salt Flat" valve  | Pipeline | District     | from North                           | from North              |
| 5    | Cut-In South Gate Valve and Disconnect Pipe                                 | 0+00     | District     | from North; CBU & Baber Out of Water | from North              |
| 6    | Install 755± feet of Poly Pipe. Tie to GVs in Line (0+00) and at Tee (7+55) | Pipeline | CONTRACTOR   | from North                           | from North              |
| 7    | Install 4-Inch Spool and Water Meter  | 5+99     | District     | from North                           | from North              |
| 8    | Connect Plant to New 4-inch Outlet  | 5+99     | BASA         | from North                           | from New Meter          |



*C. L. Wingert*  
P.E. 58416  
12/27/22

Section 1236  
T.E. & L. Survey

# BASA Ward C Plant Bypass



Sta. 0+00 Connect to 12-In Gate Valve (Installed by Others)

Install 12-inch HDPE Pipeline

Sta. 3+15.0 Install 45-Degree Bend

Sta. 4+10.1 Install 45-Degree Bend

Sta. 4+50 MATCH POINT

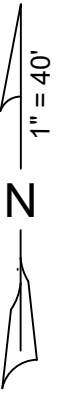
**CAUTION!**  
H2S may be present. Contractors personnel shall have H2S meters when working at this job site.

All locations, including those shown for the conflicting pipelines, are approximate. Contractor shall field verify the exact locations including all stationing, line depths and dimensions prior to construction.

C. L. Wingert  
P.E. 58416  
12/27/22

# BASA Ward C Plant Bypass

Section 1236  
T.E. & L. Survey

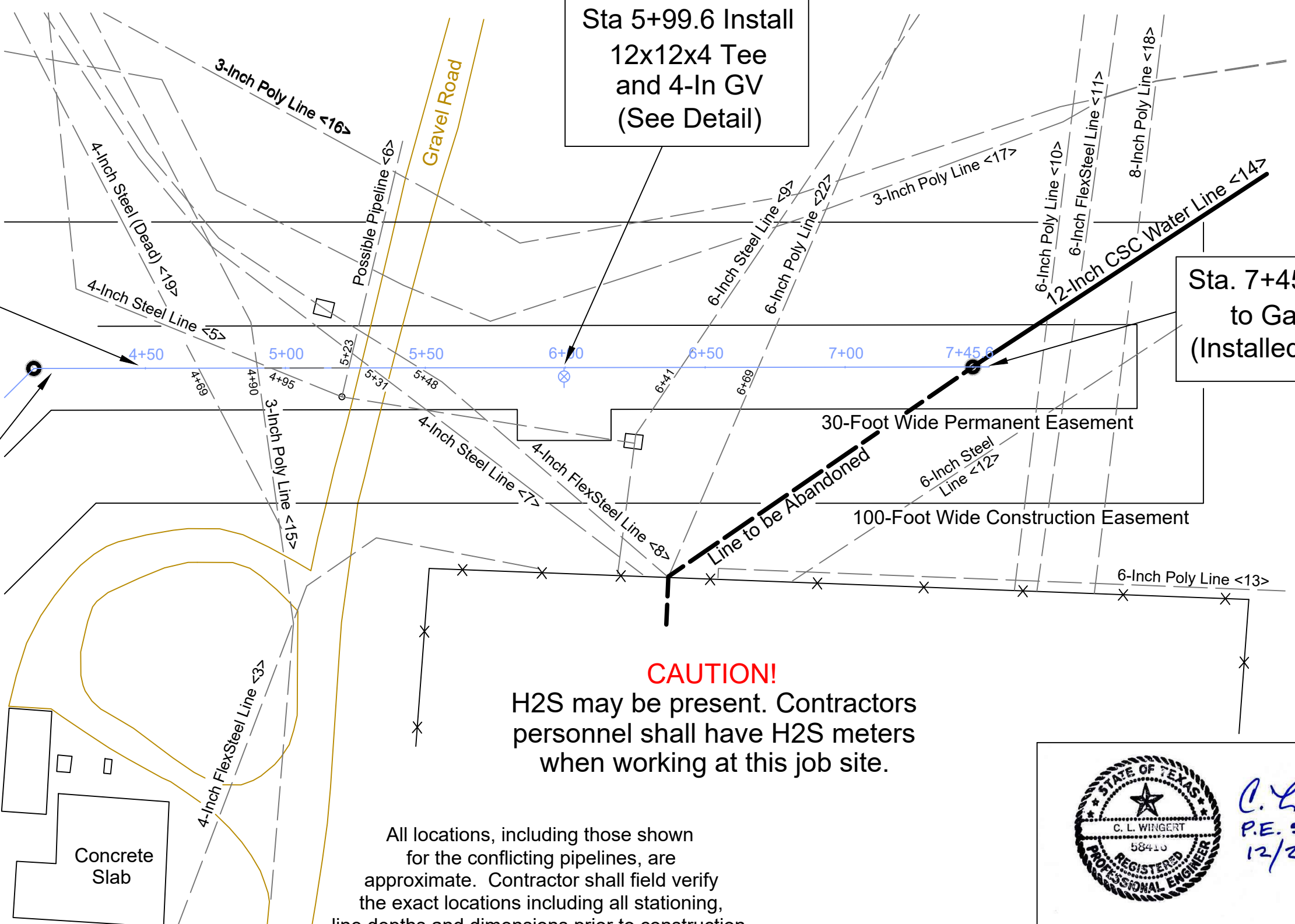


Sta 5+99.6 Install  
12x12x4 Tee  
and 4-In GV  
(See Detail)

Sta. 4+50  
MATCH POINT

Sta. 7+45.6 Connect  
to Gate Valve  
(Installed by Others)

Install 12-inch  
HDPE  
Pipeline



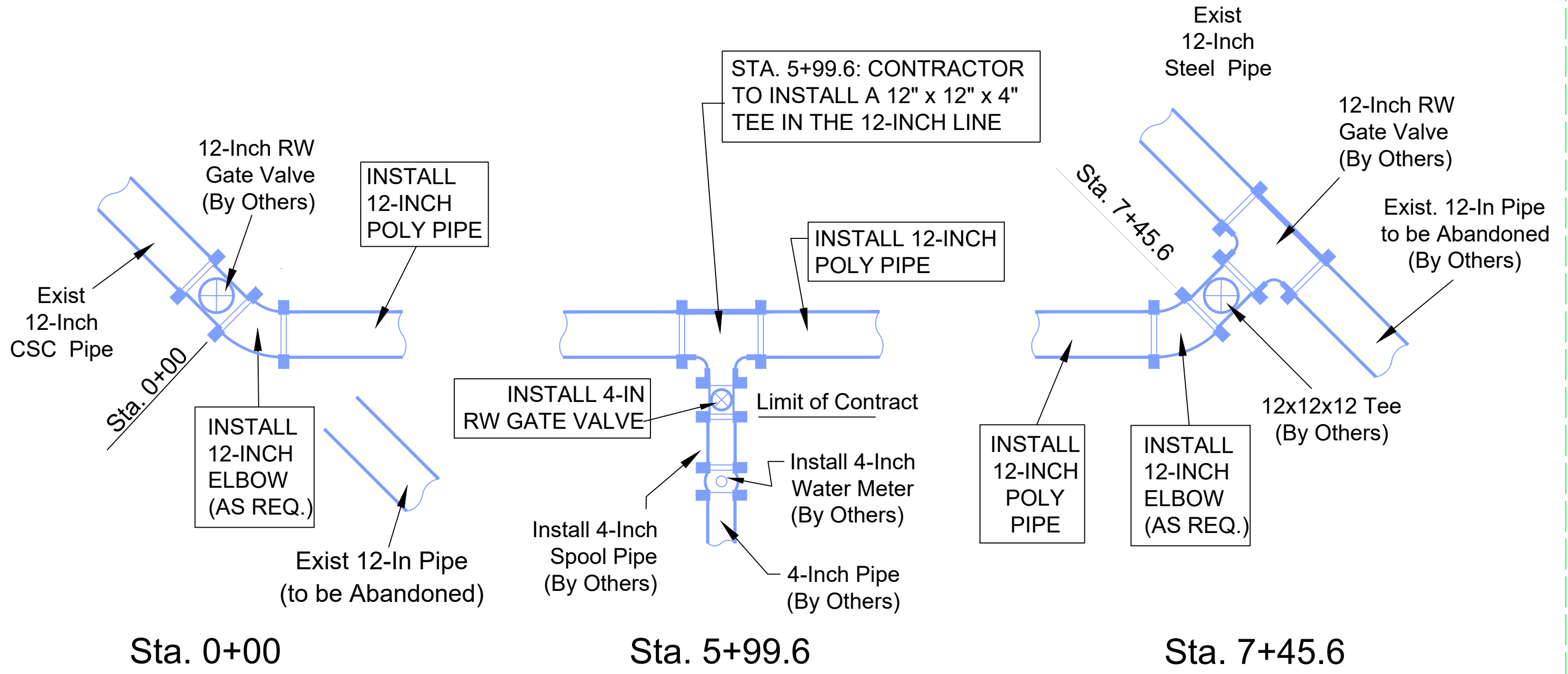
**CAUTION!**  
H2S may be present. Contractors  
personnel shall have H2S meters  
when working at this job site.

All locations, including those shown  
for the conflicting pipelines, are  
approximate. Contractor shall field verify  
the exact locations including all stationing,  
line depths and dimensions prior to construction.

C. L. Wingert  
P.E. 58416  
12/27/22

# BASA Ward C Plant Bypass

(Not to Scale)



*C. L. Wingert*  
P.E. 58416  
12/27/22

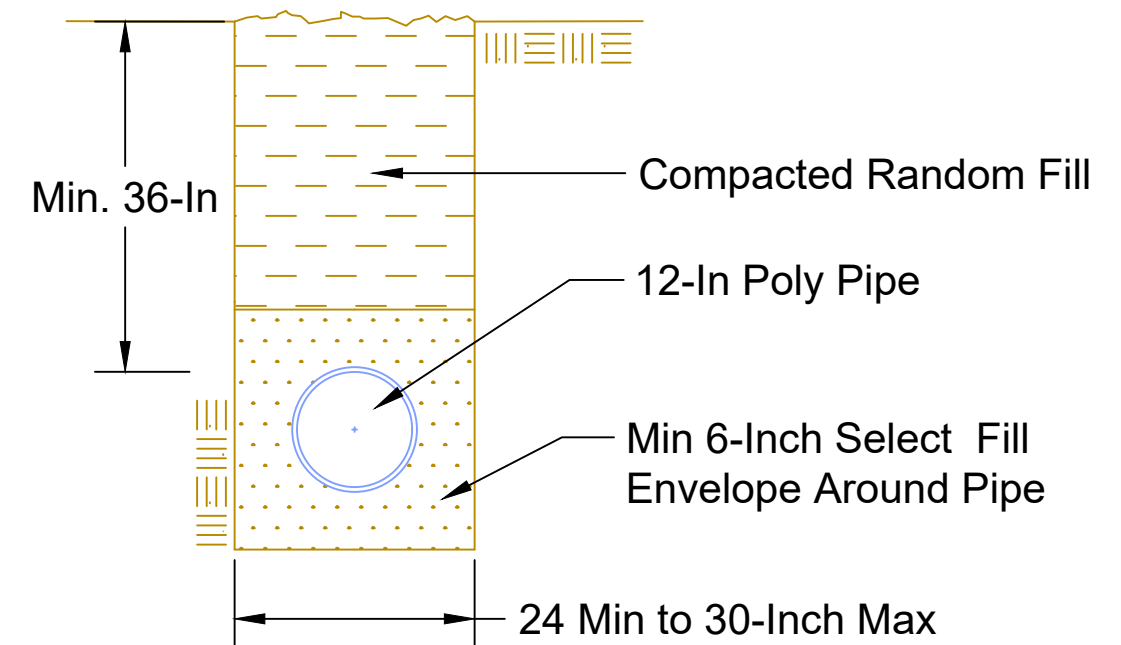
# BASA Ward C Plant Bypass

## Foreign Lines in the Vicinity of Construction

| Line | Size | Material          | Contents      | PSI   | Grade |
|------|------|-------------------|---------------|-------|-------|
| 1    | 6    | SDR7 Polyethylene | Oil-Water-Gas | 110   | Below |
| 2    | 2    | Flex-Steel        | Water         | 1,500 | Below |
| 3    | 4    | Flex-Steel        | Water         | 1,500 | Below |
| 4    | 6    | Flex-Steel        | Water         | 1,500 | Below |
| 5    | 4    | Steel             | Water         | 2,000 | Below |
| 6    |      | Unknown           |               |       | Below |
| 7    | 4    | Steel             | Water         | 2,000 | Above |
| 8    | 4    | Flex-Steel        | Water         | 1,500 | Below |
| 9    | 6    | Steel             | Water         | 2,000 | Below |
| 10   | 6    | SDR7 Polyethylene | Oil-Water-Gas | 110   | Below |
| 11   | 6    | Flex-Steel        | Oil-Water-Gas | 110   | Above |
| 12   | 6    | Steel             | Water         | 2,000 | Below |
| 13   | 6    | SDR7 Polyethylene | Oil-Water-Gas | 100   | Above |
| 14   | 12   | Steel             | Water         | 150   | Below |
| 15   | 3    | SDR7 Polyethylene | Oil-Water-Gas | 100   | Above |
| 16   | 3    | SDR7 Polyethylene | Oil-Water-Gas | 100   | Above |
| 17   | 3    | SDR7 Polyethylene | Oil-Water-Gas | 100   | Above |
| 18   | 8    | SDR7 Polyethylene |               |       | Below |
| 19   | 4    | Steel             | Abandoned     |       | Above |
| 20   | 3    | SDR7 Polyethylene | Oil-Water-Gas | 100   | Above |
| 21   | 3    | SDR7 Polyethylene | Oil-Water-Gas | 100   | Above |
| 22   | 6    | SDR7 Polyethylene |               |       | Below |

*This data is for information only, based on the current information available.  
All pipelines must be field verified by the Contractor prior to construction.*

## Typical Section (Not to Scale)

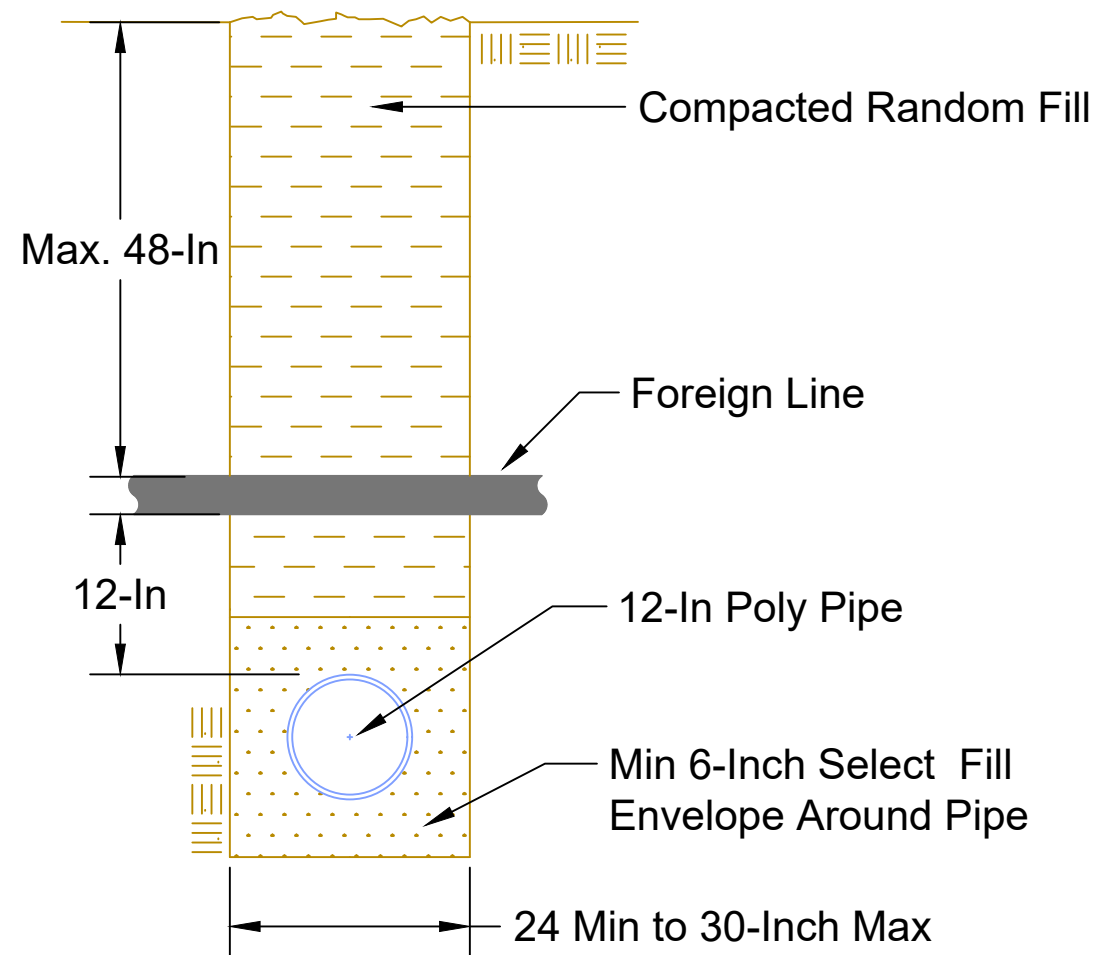


*C. L. Wingert*  
P.E. 58416  
12/27/22

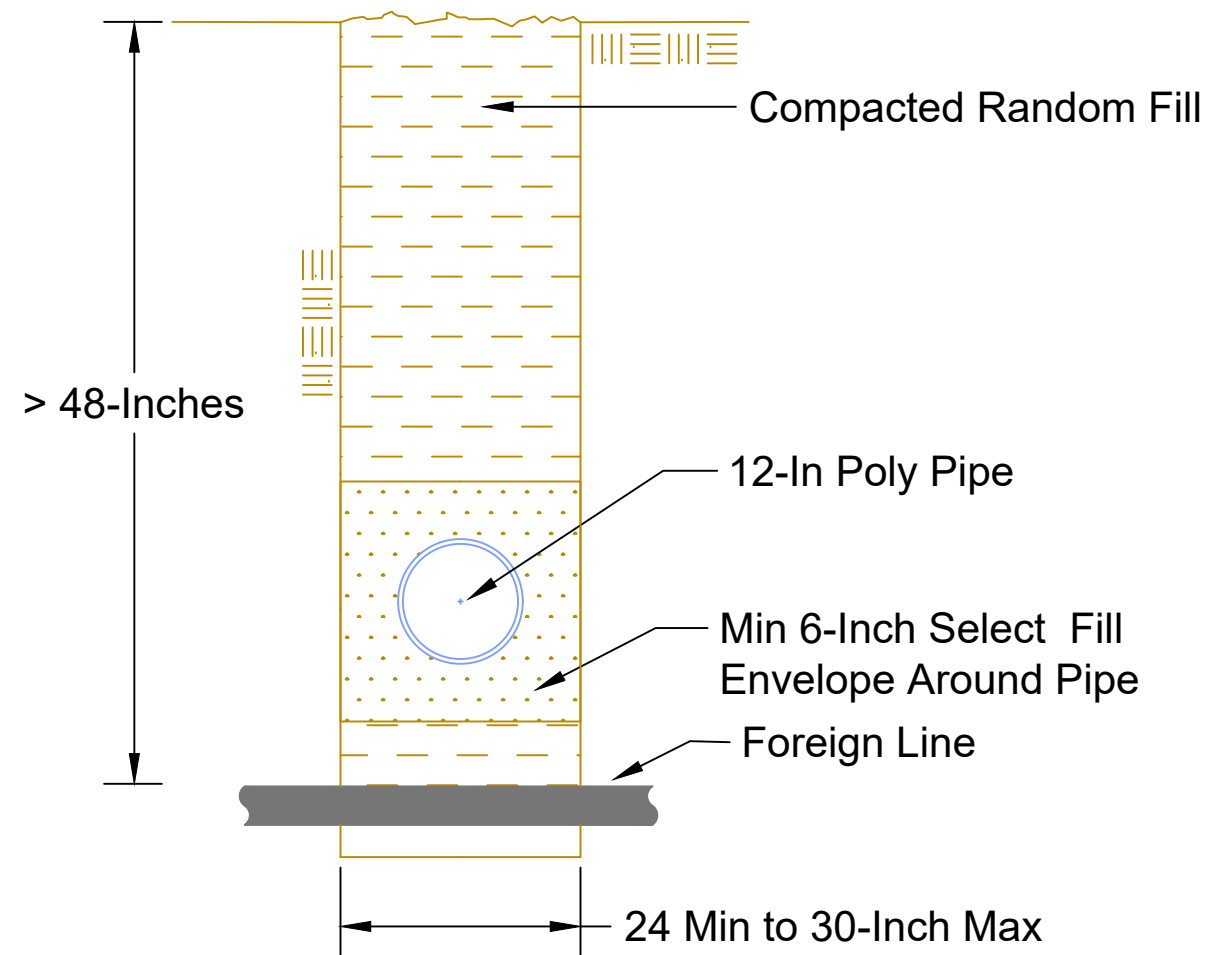


# BASA Ward C Plant Bypass

## Foreign Line Crossing "A" (Not to Scale)



## Foreign Line Crossing "B" (Not to Scale)



*C. L. Wingert*  
P.E. 58416  
12/27/22